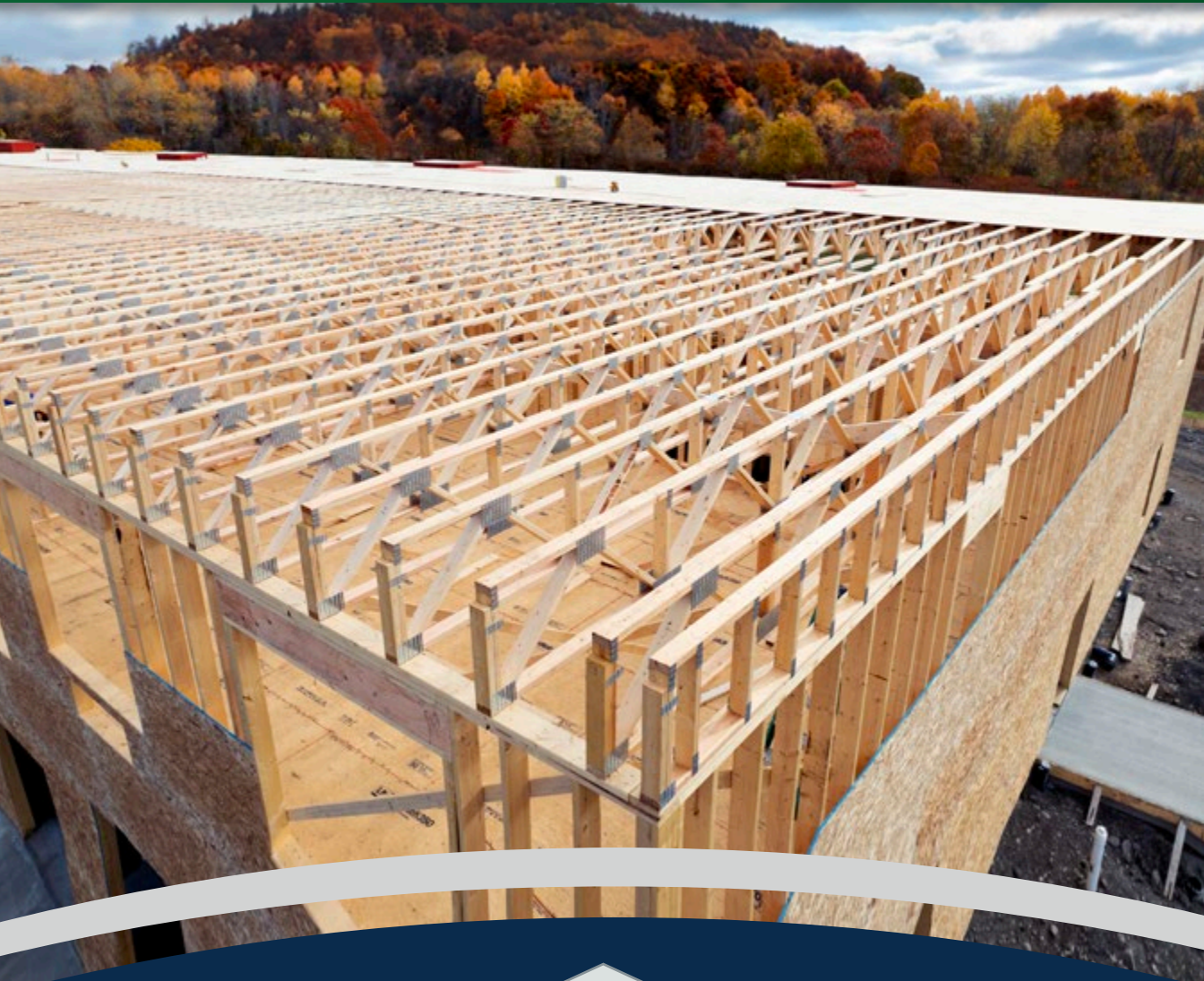


FLOOR TRUSSES



Trusses Built With "Superior" Quality

www.superiortrusses.net

Welcome...

Superior Trusses LLC was founded in 2005 in Denver, PA as a family-owned business. Our vision is to meet the growing need for high-quality roof components delivered on time and at competitive prices.

After spending time in the building industry, we recognized a need in the truss market for quality and affordable components produced in a timely manner. No matter how unique your design is, we have the ability to both design and build a truss that will not only be correct for your building, but also a product that is high quality.

At Superior Trusses, we handle residential, agricultural, and commercial needs, so whether it is a house, apartment, housing complex, or whatever else you might be building, we can deliver a product that will fit your exact need.



What we do to make a SUPERIOR FLOOR TRUSS

When you choose Floor Trusses you are getting an Engineered Floor System.

- Quality lumber selection
- Even with our high-quality lumber sources, we still cull 5-7% at the cutting phase for quality control
- The personnel of Superior Trusses are trained to focus on quality from unloading lumber to truss loading; from beginning to end
- To build a superior truss, we believe in selecting lumber with minimal flaws and high strength
- Maximum space 2' on center
- Floor trusses manufactured to your specifications and application
- Floor trusses by default are designed to accommodate ½" OSB or plywood sheathing on each outside wall
- Our engineered floor trusses reduce floor deflection on longer spans

Reduce floor deflection on longer spans (20' and over)

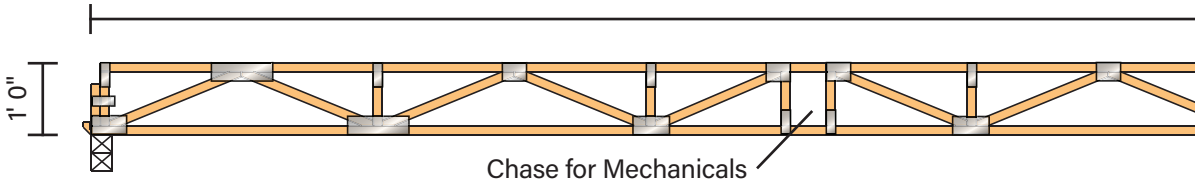
- 12" – 20'
- 18" – 30'
- 24" – 40'

Our engineered floor trusses reduce floor deflection on longer spans.

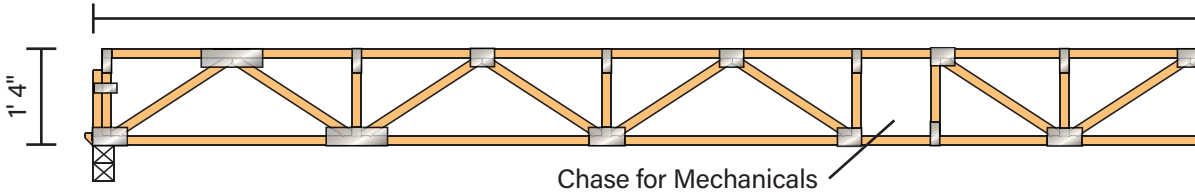


FLOOR TRUSS CONFIGURATION

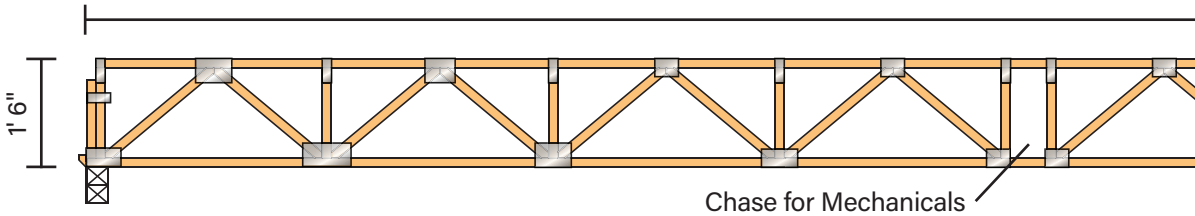
20' Floor Truss



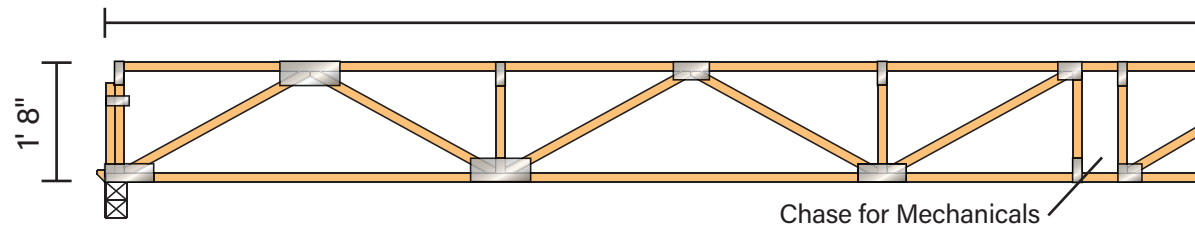
24' Floor Truss

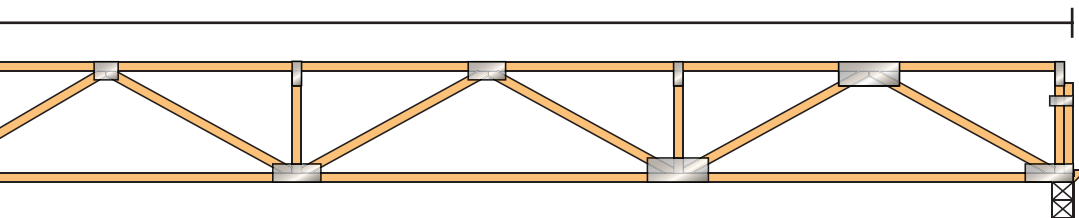
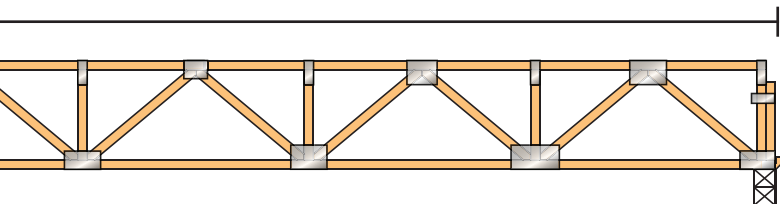
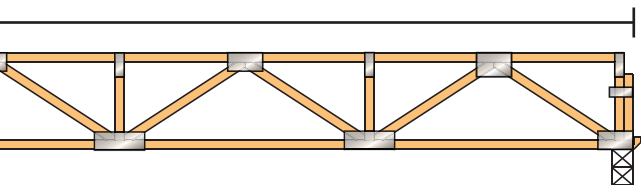
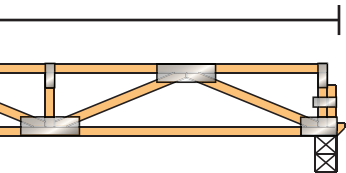


26' Floor Truss



30' Floor Truss





HIGH-QUALITY FLOOR TRUSSES

On time and at competitive prices

01

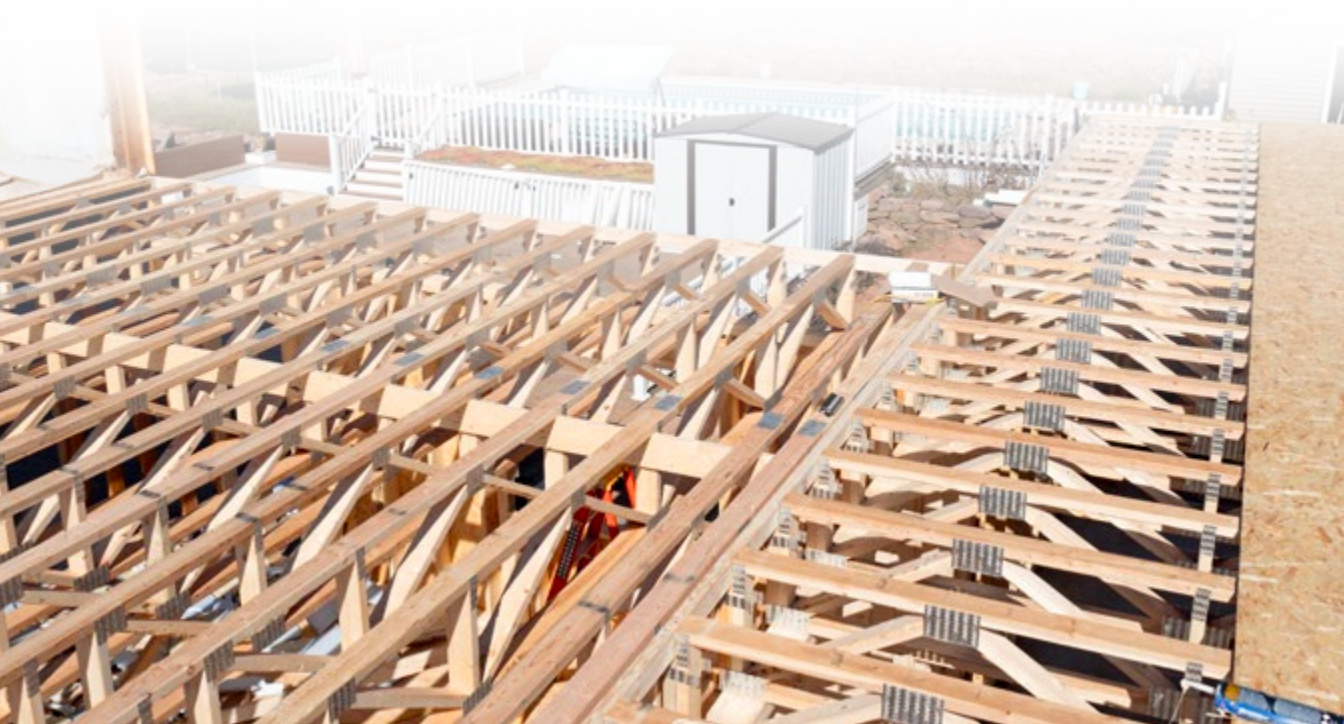
We have a team of expert designers that have the skill and experience to design a truss to your desired specifications, and deliver a top-quality product to your jobsite.

02

We produce floor trusses, as well as trusses for roofs. All trusses that we sell are designed and manufactured in our state of the art facility located in Pennsylvania.

03

We have partnered with Superior Truss Hauling for our delivery and crane needs. The partnership allows us to deliver and set your trusses in an affordable and timely manner.



WHY GO WITH FLOOR TRUSSES?

Convenience: The convenient open web pattern of floor trusses allows plumbing, electrical, and HVAC to move through each truss at almost any point diagonally without tight 90 degree turns, thus saving materials and increasing HVAC and sewer line efficiency. With girder trusses there is no need for LVL beams beside stairs or anywhere in the floor system, thus giving mechanical installers an easy straight run with their pipes, wires, and ducts.

Drywall Ready: Also, keeping all mechanicals in the floor system makes it easy to finish a basement without any bulkheads or drop ceilings.

Efficiency: Floor trusses are easy to install with no waste from cutting floor joists; everything fits right into place with a pre-engineered and thought-out plan, leaving a beautiful downstairs, with no interior walls needed.

Clear span: With up to 40' clear span there is no need to have posts in the middle of your downstairs living space. Trusses can be built in heights of 12" to 24". Every 1' high you can go 20' in length thus a 2' high truss can clear a span of 40'. If you are concerned about the height of these trusses, they can also be built with top cord bearing thus making top of floor only a few inches off top of wall.

Rim Board for a floor truss is simply OSB. No additional blocking needed, and no need for 2' x 10' rim joists. I-joists use 1" plywood to wrap around the whole house as well as using squash blocks and web stiffeners glued to the side where bearing points are located.



PRE-ENGINEERED FLOOR TRUSSES



Trusses Built With "Superior" Quality

www.superiortrusses.net

floortrusses@superiortrusses.net

(717) 721-2411

Superior Trusses LLC
230 Enterprise Road,
Lititz, PA 17543
(717) 721-2411